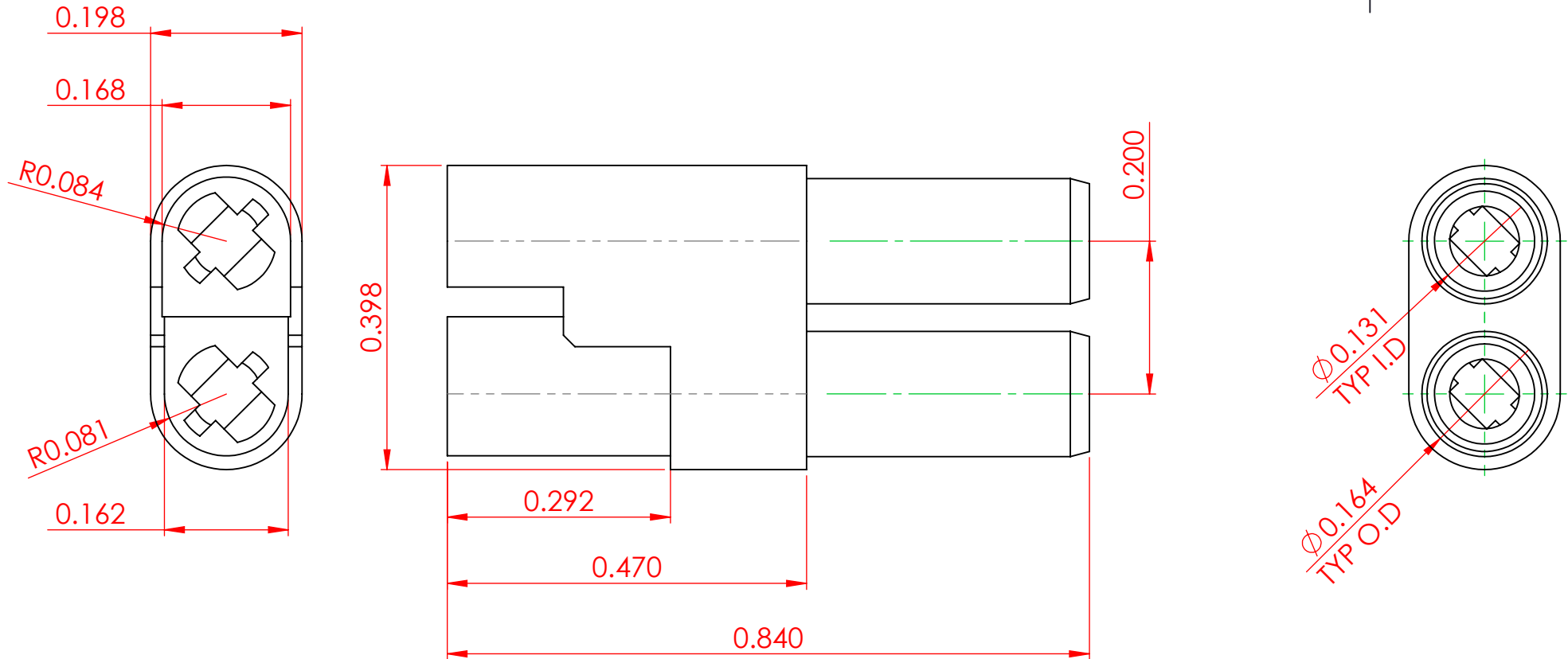


TOLERANCE UNLESS OTHERWISE SPECIFIED	
.XX	±0.005
.XXX	±0.003

THIS IS A C.A.D. GENERATED DRAWING  
DO NOT MAKE MANUAL REVISIONS TO MASTER.



ISSUE NUMBER	
ORIGINAL	①



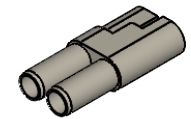
**NOTES:**

**MATERIAL:**

20% GLASS REINFORCED POLYCARBONATE  
GREY IN COLOR

**COMPATIBLE CONTACTS:**

- 516-290-500 - WIRE HOLE
- 516-290-520 - PCB TAIL
- 516-290-542 - WIRE WRAP
- 516-290-590 - CRIMP



ISO - 1:1



THIS SERIES FULLY CONFORMS TO  
THE EUROPEAN UNION DIRECTIVES  
2011/65/EU FOR RoHS COMPLIANCY.



YOUR CONNECTION TO QUALITY & SERVICE

EDAC INC  
TORONTO, ONTARIO  
CANADA

THESE DRAWINGS AND SPECIFICATIONS  
ARE THE PROPERTY OF EDAC INC., AND  
SHALL NOT BE REPRODUCED, OR COPIED  
OR USED AS THE BASIS FOR THE  
MANUFACTURE OR SALE OF APPARATUS  
WITHOUT WRITTEN PERMISSION.

520 SERIES - 2 POSITION HOUSING		ACAD REFERENCE NO.: 520-210-002	
		DRAWN: F.BRIONES	DATE: JAN. 31/2000
		CHECKED:	DATE:
		SCALE: 5:1	SHEET 1 OF 1
DRAWING NUMBER: 520-210-002			ISSUE
PART NUMBER: 520-210-002			1