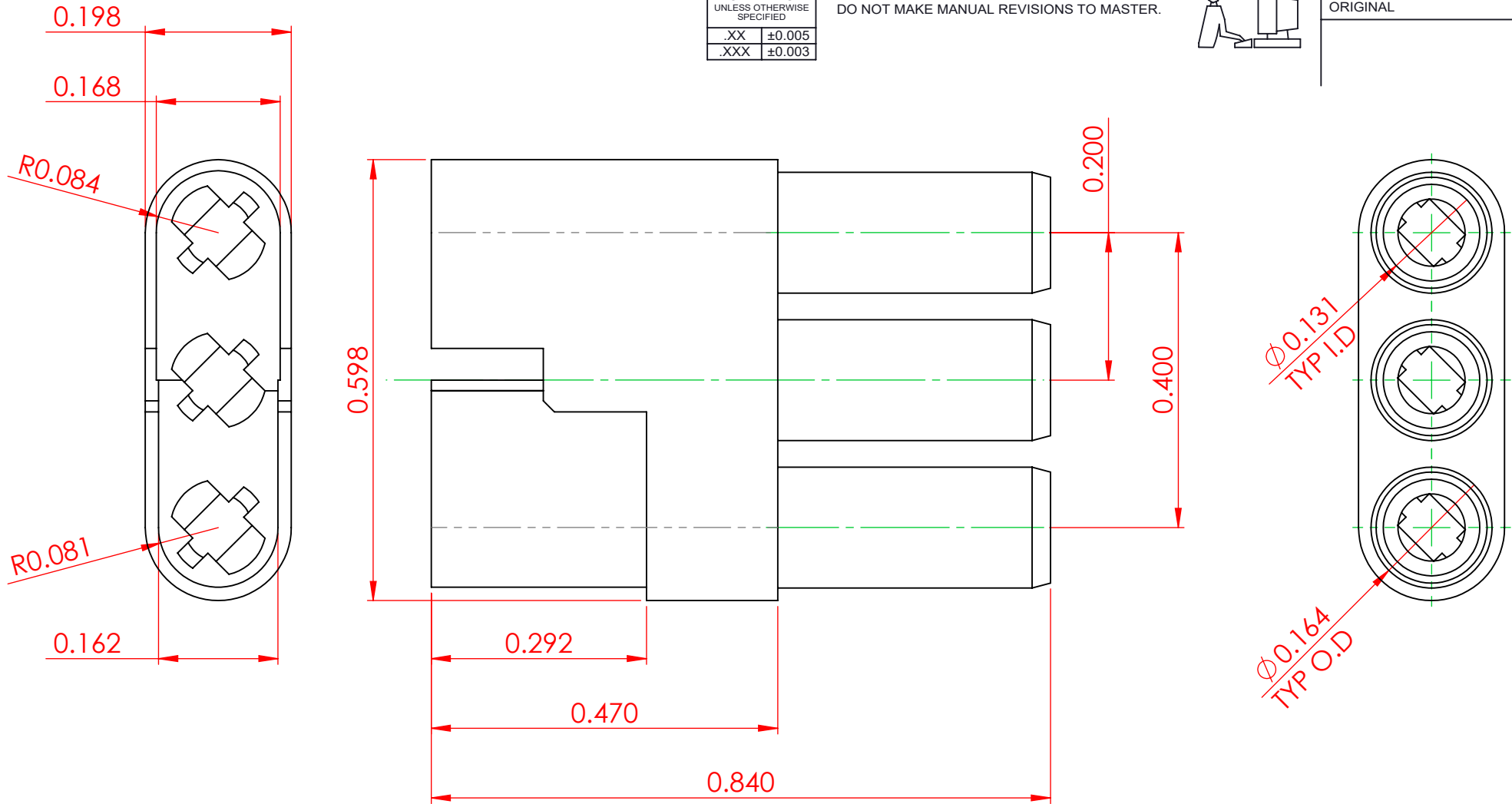


TOLERANCE UNLESS OTHERWISE SPECIFIED	
.XX	±0.005
.XXX	±0.003

THIS IS A C.A.D. GENERATED DRAWING
DO NOT MAKE MANUAL REVISIONS TO MASTER.



ISSUE NUMBER	
ORIGINAL	①



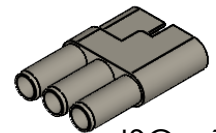
NOTES:

MATERIAL:

20% GLASS REINFORCED POLYCARBONATE
GREY IN COLOR

COMPATIBLE CONTACTS:

- 516-290-500 - WIRE HOLE
- 516-290-520 - PCB TAIL
- 516-290-542 - WIRE WRAP
- 516-290-590 - CRIMP



ISO - 1:1



THIS SERIES FULLY CONFORMS TO
THE EUROPEAN UNION DIRECTIVES
2011/65/EU FOR RoHS COMPLIANCY.



YOUR CONNECTION TO QUALITY & SERVICE

EDAC INC
TORONTO, ONTARIO
CANADA

THESE DRAWINGS AND SPECIFICATIONS
ARE THE PROPERTY OF EDAC INC., AND
SHALL NOT BE REPRODUCED, OR COPIED
OR USED AS THE BASIS FOR THE
MANUFACTURE OR SALE OF APPARATUS
WITHOUT WRITTEN PERMISSION.

520 SERIES - 3 POSITION HOUSING		ACAD REFERENCE NO.: 520-210-003	
		DRAWN: F.BRIONES	DATE: JAN. 31/2000
		CHECKED:	DATE:
		SCALE: 5:1	SHEET 1 OF 1
DRAWING NUMBER: 520-210-003			ISSUE
PART NUMBER: 520-210-003			1