

# PBC15

Panel Mount Connectors

M20 x 1,5 with Single Wires

615 Series



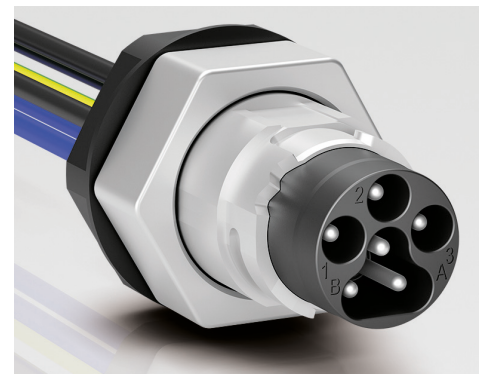
# PBC15

Series	615
Contacts	3 (Power) + 2 (Signal) + PE
Locking system	Bayonet
Rated current	16 A / 10 A
Rated voltage	600 V / 63 V
Degree of protection	IP66/IP67 mated and locked
Contact plating	Ag (silver)
Termination	single wires
Wire gauge	1,5 mm <sup>2</sup> / 2,5 mm <sup>2</sup>
Type standard	DIN EN IEC 61076-2-116



## 615 Series • Panel Mount Connectors PBC15 with Single Wires and M20 x 1,5 Fixing Thread

- Portfolio extension to include panel mount connectors with single wires
- Quick locking system for time-saving installation
- Variants with plastic and metal housing
- Wire gauge 1,5 mm<sup>2</sup> and 2,5 mm<sup>2</sup>
- Standard wire length 250 mm
- UL approval

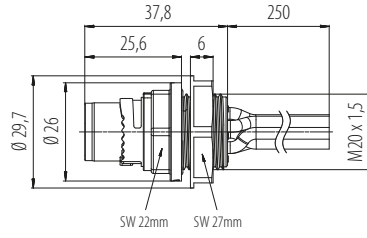


**Description**

Male panel mount connector, with single wires, plastic housing



**Drawing**



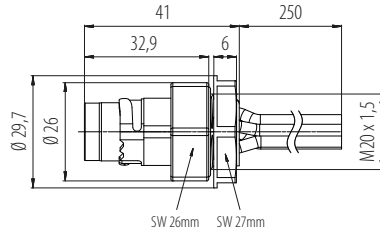
**Contacts**

**Wire gauge**

**Ordering-No.**

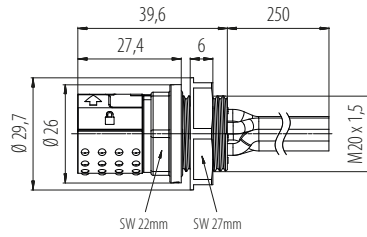
3+2+PE	1,5 mm <sup>2</sup>	09 6111 150 06
	2,5 mm <sup>2</sup>	09 6111 250 06

Male panel mount connector, with single wires, metal housing, shieldable



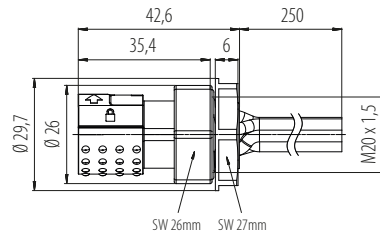
3+2+PE	1,5 mm <sup>2</sup>	09 6121 150 06
	2,5 mm <sup>2</sup>	09 6121 250 06

Female panel mount connector, with single wires, plastic housing



3+2+PE	1,5 mm <sup>2</sup>	09 6112 150 06
	2,5 mm <sup>2</sup>	09 6112 250 06

Male panel mount connector, with single wires, metal housing, shieldable

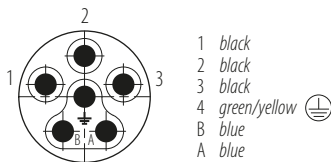


3+2+PE	1,5 mm <sup>2</sup>	09 6122 150 06
	2,5 mm <sup>2</sup>	09 6122 250 06

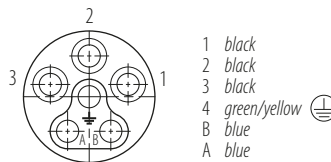
**Contact arrangements**

Male insert (mating side)

3+2+PE

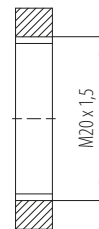


Female insert (mating side)

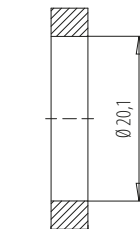


**Panel cut out**

With thread



With bore hole



max. 6,6 Plastic housing  
max. 2,0 Metal housing